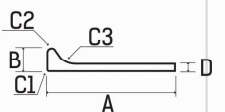
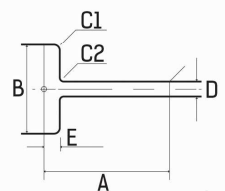




These average mechanical specifications are given as an indication for 3 up to 50 mm thicknesses. They can not be guaranteed in any way. Rp0.2 value before welding (N / mm²) based on average mechanical properties at 20°C. Rp0.2 value after welding (N / Mm²) issued from BV rule NRS61.



PROFILES :

Profile sections	Round tubes	Flat bars	"T" Profiles	Angle bars
30	3.0			
30	5.0			
33.4	4.55			
40	4.00			
40	5.0			
40	8.0			
40	10.0			
42.2	4.85			
48.3	5.08			
50	5.0			
50	10.0			
60	5.0			
60	6.0			
60	8.0			
60.3	5.54			
70	4			
70	5.0			
76.1	7.01			
80	5.0			
80	6.0			
80	8.0			
88.9	7.62			
90	5.0			
100	5.0			
100	10.0			
101.6	8.08			
110	5			
114.3	8.56			
120	15			
125	5.0			
140	5.0			
150	5.0			
160	5.0			
200	5.0			

5754 H111 6082 T6

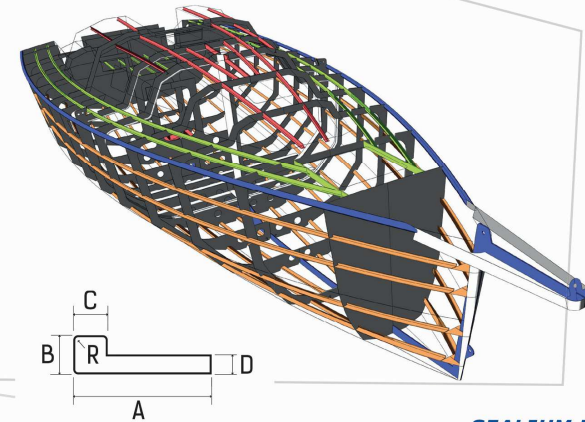
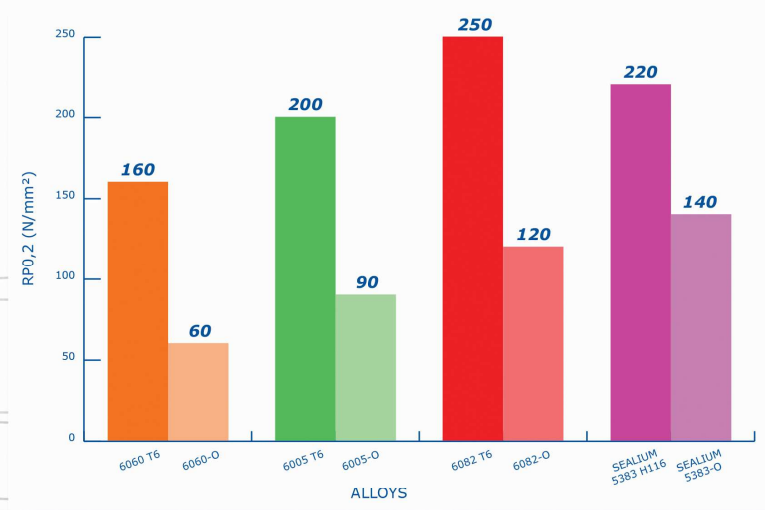
6060 RANGE :

Section	From	To
	16x2	250x5
	20x20x1.5	150x150x5
	25x15x2	200x100x4
	10x5	200x10
	15x15x1.5	100x100x10
	15x10x2	100x50x5
	10x10x2	160x80x10
	25x25x2	80x80x8
	140x90x8	
	Ø10	Ø50
	10	50

Please contact us for round bars cut to length, drilling and machining.

5083 H111

PROFILES YIELD STRENGTH - BEFORE & AFTER WELDING



6005A T6 BULB BARS :

Sections (mm)	45x4	60x5	85x5	100x6	120x6	150x8
A	45	60	85	100	120	150
B	11.5	15.0	20.0	24.0	28.0	60.0
C	8	11	15	18	22	20
D	4	5	5	6	6	8
R	2	2	2	2	3	3
Theoretical weight Kgs/Ml	0.65	1.11	1.76	2.50	3.25	6.05

SEALUM BULB BARS :

Sections (mm)	40x4	50x4.5	60x4.8	70x5	80x5	90x5.5	100x5.5	120x6
A	40	50	60	70	80	90	100	120
B	8.0	10.0	12.0	14.0	16.6	18.0	21.0	30.0
C1	R2	R2	R2	R2	R2	R2	R2	R2
C2	R4	R4	R4	R4	R4	R4	R4	R3
C3	R6	R10	R10	R12	R14	R16	R18	R20
D	4.0	4.5	4.8	5.0	5.0	5.5	5.5	6.0
Theoretical weight Kgs/Ml	0.50	0.72	0.95	1.15	1.37	1.66	2.02	2.65

BV SAWED 5083 H111 FLAT BARS :

